



PRESSURE PLUG and PROBE

To Eliminate PERMANENT GAUGES

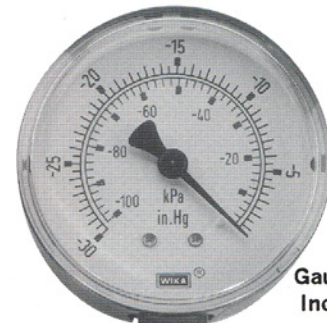
REPAIRABLE PLUG

For periodic checking of wellhead pressure or in any systems where gauges are normally used as a permanent device.

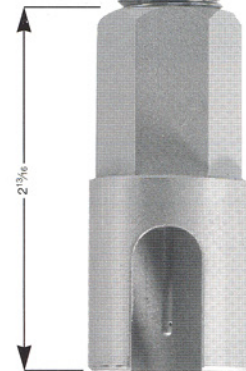
Prevents breakage and deterioration by using one master gauge. The plug is protected from the elements and has both 1/4" Female NPT x 1/2" Male NPT thread. The probe has either 1/4" Female NPT or 1/2" Female NPT thread to receive your gauge.

The plug is completely repairable in the field. A repair kit is available. It contains all parts inside of plug body.

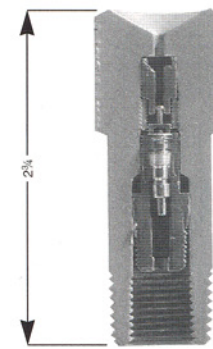
The tool is made of 303 Stainless Steel. The valve assembly is the same as used in ordinary high pressure equipment. **Assembly has been tested to 5000#.**



Gauge Not Included



PROBE



PRESSURE PLUG

303SS PART NUMBER	DESCRIPTION AND SIZE
265 2302	PRESSURE PLUG only 1/4" Female NPT x 1/2" Male NPT
265 2308	PROBE only 1/4" Female NPT
265 2309	PROBE only 1/2" Female NPT
265 2319	REPAIR KIT for Pressure Plug only

MATERIAL SPECIFICATIONS:

- Add "316" to part number for Stainless Steel pressure plug or probe.